

RooTenna18 Panel Antenna

2400 to 2485 MHz Operation

Features

- RooTenna, the antenna with a pouch!
- Low Profile 19 dBi Antenna Gain
- 16.25" x 14.75" x 1" Weatherproof Radio Compartment
- Low Heat Absorption White UV Protected Housing
- Vertical or Horizontal Polarization, Beamwidth 15/20 deg
- Available with RPSMA, RPTNC, MC Card, MMCX, RPMMCX and U.FL antenna connector



RT24-18
New Low Profile
White Model

Applications

- Integrated Radio/ Antenna Units
- WISP CPE Equipment
- Amplified Antennas
- 802.11b/g Applications

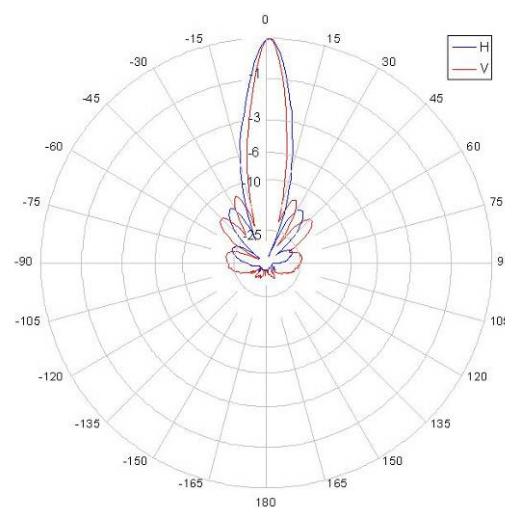
Description

The RooTenna18 panel antenna offered by Pacific Wireless is designed to allow integration of the customers' radio equipment inside the weatherproof compartment. The radio compartment is big enough to house transceivers, amplifiers, and other electronic equipment. The antenna design utilizes a unique suspended wire element over a solid backplane for more consistent performance over temperature and humidity conditions. The housing is UV stabilized ABS plastic. The backplate is alodine coated aluminum with stainless steel fasteners. All bracket fasteners are stainless steel for corrosion protection.

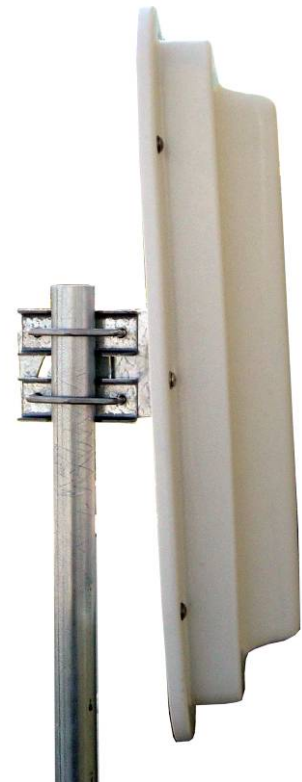
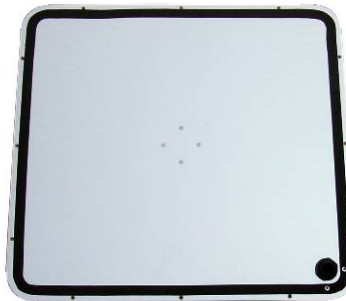
Specifications

Parameter	Min	Typ	Max	Units
Frequency Range	2400		2485	MHz
Input Return Loss (S₁₁)		-14		dB
VSWR		1.5:1		
Impedance		50		OHM
Input Power			20	W
Operating Temperature	-45		+70	Deg C
Gain		19		dBi
3db Beam Angle (E-Plane)		15		Deg
3dB Beam Angle (H-Plane)		20		Deg
Front to Back	30			dB
Weight		6 (2.7)		Lb (kg)
Compartment Dim(L x W x H)	16.25" x 14.75" x 1" (413 x 375 x 25)			Inches (mm)
Outside Dim (L x W x H)	18.5" x 16.8" x 2.5" (470 x 427 x 64)			Inches (mm)

Antenna Patterns at 2.45GHz



<i>Wind Loading</i>	100MPH	125MPH	100MPH with 1/2" Radial Ice
<i>Force (Lbs)</i>	77.8	121	83



Notes:

- All shipments F.O.B. Bluffdale, UT 84065
- All antennas carry a 2 Year Warranty



System Ordering:

RT24 -18-

Connector Type

- RSMA = Reverse Polarity SMA Male
- RTNC = Reverse Polarity TNC Male
- MC = MC Card Plug Connector
- MMCX = MMCX Plug Connector
- RMMCX = Reverse Polarity MMCX Connector
- UFL = U.FL (MHF) Miniature Connector



For further information contact:



Pacific Wireless

14575 South Centerpoint Way
 Bluffdale, UT 84065
 TEL (801) 572-3024
 FAX (801) 572-3025
 www.pacwireless.com