

# ANT-290

## MIMO 617MHz - 6000MHz, 3-5dBi Omnidirectional 5G LTE Antenna with N-Female Connector

### Application

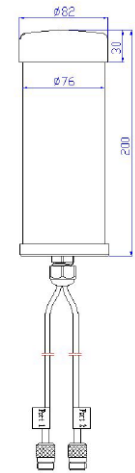
Used in 2G/3G/4G/5G/WLAN system

### Electrical specifications

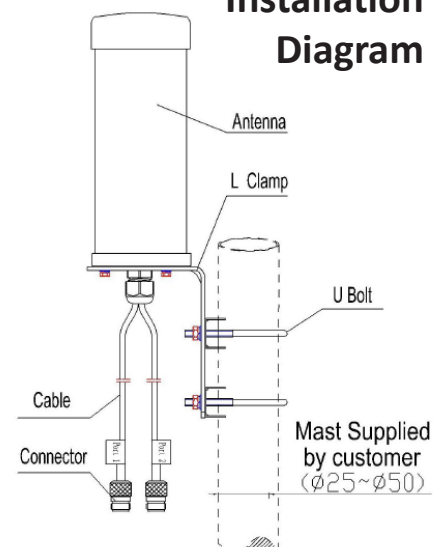
Frequency range (MHz)	617-960	1710~2700	3300~4000	4900~6000
Polarization	2*Vertical			
Maximum Gain (dBi)	3	5	5	5
Horizontal beam width (°)	360			
Typical Vertical beam width (°)	85	70	55	28
Impedance (Ω)	50			
VSWR	≤2.5			
Maximum power (W)	50			

### Mechanical specifications

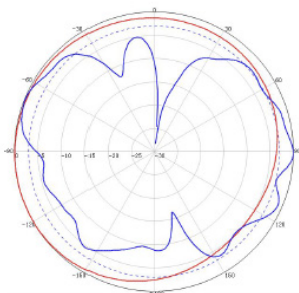
Connector	N-Female Connector
Customized Cable Length (cm)	Pigtail 35cm Cable
Connector position	Bottom
Antenna size (mm)	Φ82*200
Packing size (mm)	330*105*90
Weight (kg)	0.8 (Include bracket)
Radome material	UPVC
Radome color	White
Operating humidity (%)	5~95
Operating temperature (°C)	-40~60
Application	Outdoor
Rated wind velocity (m/s)	40
Suitable pole diameter (mm)	Φ25-Φ50
Mounting kit	L Clamp



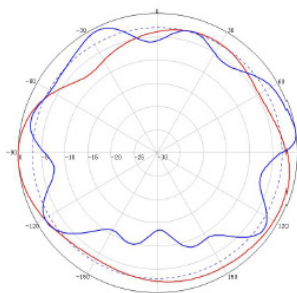
### Installation Diagram



617~960MHz Typical pattern:



1710~2700MHz Typical pattern:



3300~6000MHz Typical pattern:

