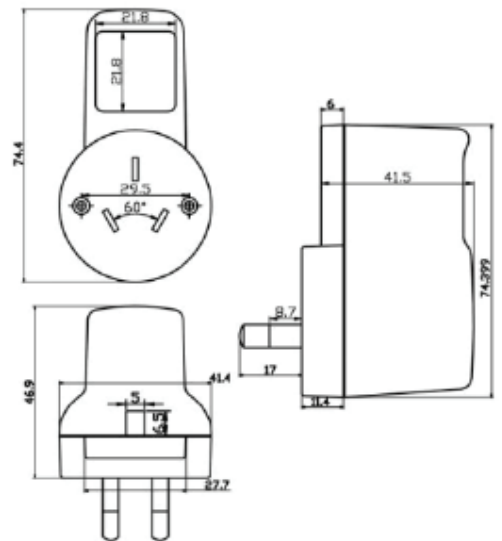


# Power Supply

PS-5V2A-XXX Technical Sheet  
 Power Supply 5V 2A Mains Plug  
 Pack NZ SAA Approved



## Specifications

| Model                | PS5V2A        | PS5V2AUSB   |
|----------------------|---------------|-------------|
| Input Voltage        | 100-240VAC    | 100-240VAC  |
| Output Voltage       | 5VDC          | 5VDC        |
| Output Current (Max) | 2A            | 2A          |
| Output Plug Type     | 2.1mm DC Plug | USB Micro-B |

Standard: AS/NZS 60950.1:2011

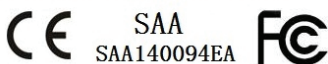
Approval marks: SAA-140094-EA or RCM

AC/DC ADAPTOR

MODEL : JK0502000

INPUT : 100-240VAC 50~60HZ

OUTPUT : 5V 2000MA DC



MADE IN CHINA