



RM-12

This powered subwoofer leaves nothing to be desired. The RM-12 uses a robust, 500 watt, black anodized aluminum woofer, driven by a powerful A/B amplifier built exclusively for this cabinet and driver array.

The RM-12 sounds fantastic with all TruAudio architectural speakers, making combining different models in an AV system simple. Additional speakers can be added to a system with the confidence that the speakers will remain balanced. With over 2 years of engineering and testing, the RM-12 completes the TruAudio theater package.

Contents

The RM-12 includes: Subwoofer cabinet and grill, power cord, instruction manual and (4) heavy-duty plastic feet attached to the bottom of the cabinet.

Unpacking and Inspection

Inspect your subwoofer immediately upon opening for any kind of damage. If for some reason damage has occurred, please contact your Dealer or TruAudio immediately. We recommend that you retain the packaging in case a need arises for you to transport your speaker.

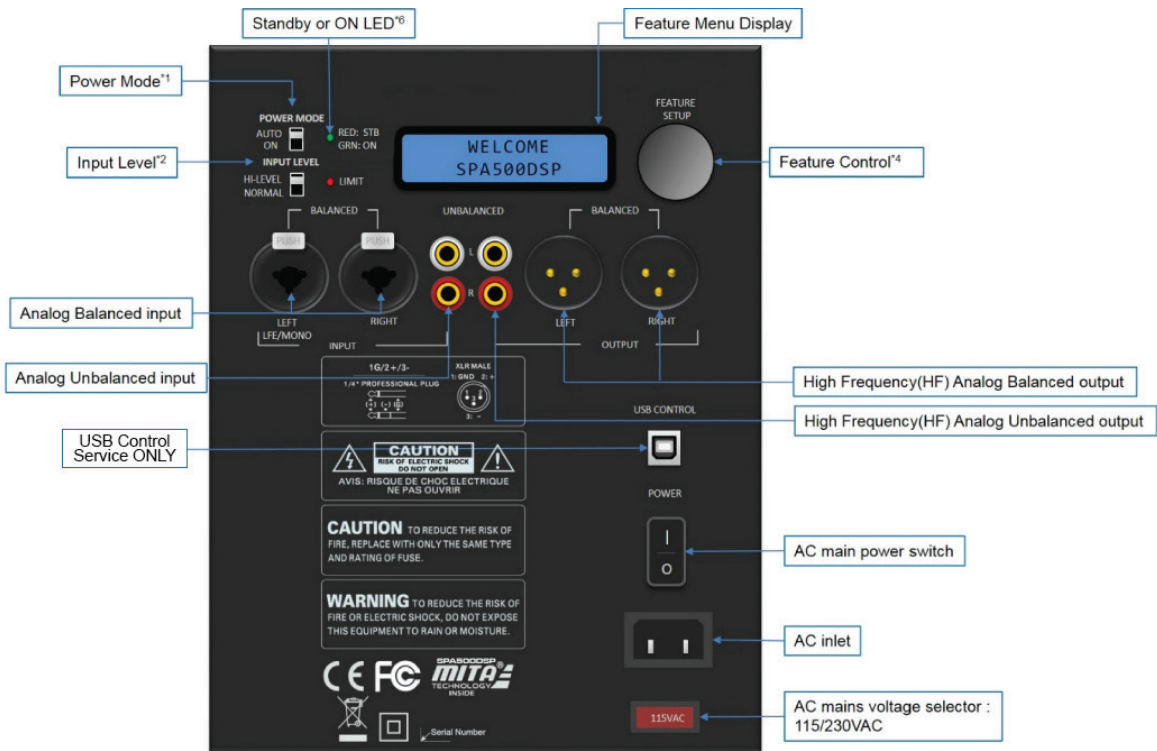
CAUTION: DO NOT OPEN THE SUBWOOFER. THIS WILL VOID THE WARRANTY.

To reduce the risk of electrical shock and fire, do not remove the amplifier panel from the back of the cabinet or the subwoofer from the front of the cabinet. There are NO fuses or serviceable parts. All service to this product MUST be done by a TruAudio Authorized repair center.

Before installing, please read the following instructions:

- Always turn off the power of your receiver/preamp and the powered subwoofer
- When turning your amplifier/receiver on, make sure your volume is turned all the way down
- Never expose the subwoofer to excessive cold, heat, humidity, or direct sunlight
- This device should never be used in, on or near water due to risk of fatal shock
- DO NOT attempt to open or dismantle this subwoofer
- The subwoofer should always have plenty of air flow to reduce the chance of over heating

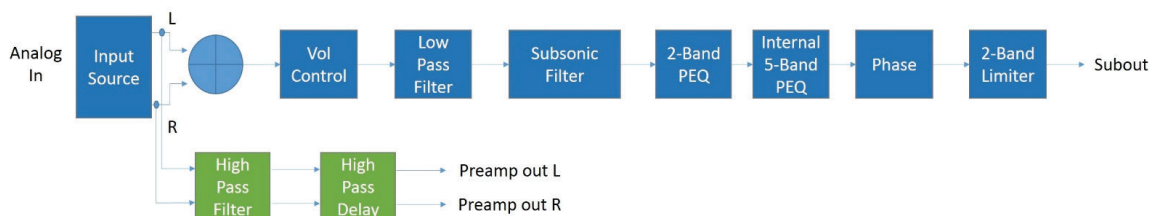
Back panel and input/output (I/O) definition

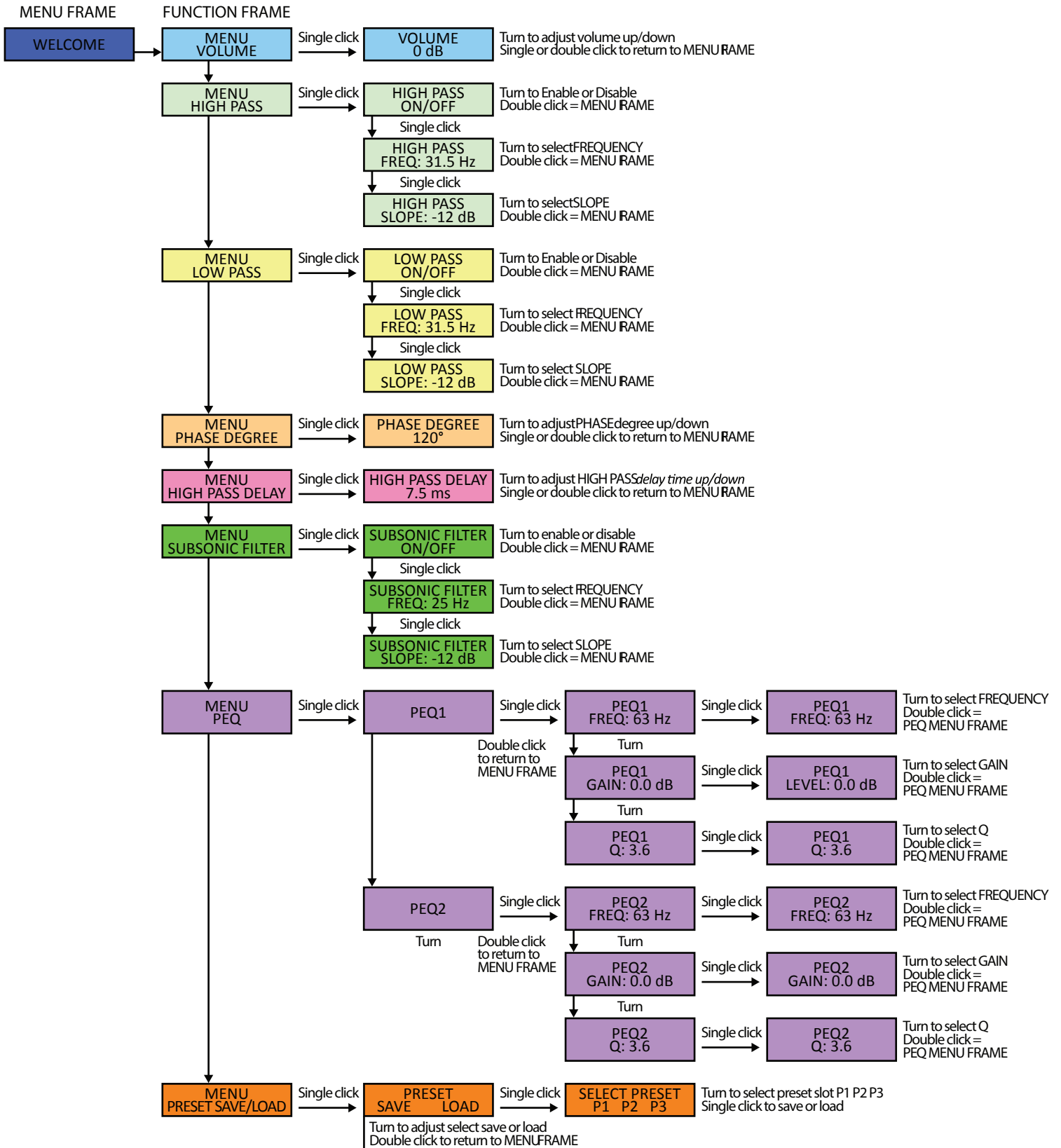


- Power Mode:** Select the either energy-saving or “always-on” power mode
 - o **Auto:** Amp goes into standby after no detected signal input for 20 minutes*
 - o **On:** Amp is always on, regardless of input signal status.

* Amp will automatically turn on typically in one second or less once audio signals are resumed.
- Analog input attenuation:** Affects analog balanced and unbalanced inputs only.
 - o **Normal:** No attenuation.
 - o **Hi:** Attenuates input signal by -6dB.
- USB Control - Service Only**
- Feature Control:** Single knob digital actuator with single/double-click enabled with rotary scrolling to navigate the amp’s extensive feature menu.
- Standby/On LED:**
 - o Red when amp is in energy saving “stand by” state.
 - o Green when amp is operating normally.

DSP processing block diagram





- | | |
|--|--|
| VOLUME | HIGH PASS DELAY |
| HIGH PASS | SUBSONIC FILTER |
| LOW PASS | PEQ |
| PHASE DEGREE | PRESET SAVE/LOAD |



NOTES ABOUT HUM

While this amplifier has been designed to minimize the possibility of hum in the subwoofer system, it is still possible that a hum may occur in rare circumstances. Safety grounding can create a path for small amounts of 60 Hz energy to travel through the line-level audio system. While not dangerous, this energy can cause difficulty with the subwoofer auto signal sensing circuit, and will interfere with the quiet enjoyment of your system. The first course of action should be trying to make sure that all of the audio components are connected to either the same electrical outlet, or at least into the same circuit branch. Next, cable TV systems are notoriously the culprit, so be sure to try disconnecting all coaxial feeds that are connected to the system. If this solves the problem, install a coaxial line isolator and reconnect the system. Worst case, a line-level audio isolator/transformer connected to the line-in of the subwoofer amplifier can usually solve the problem.

Cleaning the Subwoofer

All RM series subwoofers feature lightly textured, durable paint finish. When needed, we suggest cleaning with a damp cloth with water only. Do not use any kind of abrasive cleaners or detergents.

RM-12 Specifications

Speaker Type:	High-end Powered Subwoofer
Enclosure Design:	Front firing, ported cabinet, internally braced
Driver:	12" black anodized aluminum cone, cast basket, long excursion, 2.5" 2-layer voice coil.
Power, class D:	500 watt into 4 ohms with internal amplifier
Frequency Range:	25-125 Hz (+/-3 dB)
Inputs:	Line level RCA, balanced inputs
Outputs:	Line level RCA, balanced outputs
Amplifier Protection:	Short circuit thermal protection
Cabinet:	Real wood veneer, Built in St. George, UT
Cabinet Dimensions:	17.7" High (including feet) 17.0" Wide 16.2" Deep
Grill:	Frame wrapped in black speaker cloth
Available Colors:	Black in stock. Other colors available with 3 week lead time.

SoundVision Technologies dba TRUAUDIO

SUBWOOFER and ELECTRONIC PRODUCT WARRANTY

All subwoofers and amplifiers have a limited 5 year warranty. This warranty includes 5 year parts and repair labor on all components. The warranty extends only to the original purchaser of the product and not to any subsequent owner. TRUAUDIO's obligation under these warranties is limited to repairing or replacing any component found defective in material or workmanship under normal conditions of use with an equal and/or current product. These warranties shall not apply to products which have been abused, modified, or disassembled. Products to be repaired or returned under this warranty must be returned to the factory through an authorized TruAudio dealer with all transportation and insurance charges prepaid.

It is the policy of TRUAUDIO to continuously incorporate improvements into our products. All specifications are subject to change without notice. If you have any questions regarding this or any other TRUAUDIO products, please visit www.TruAudio.com or contact us:

Office: 1-888-858-1555, Monday-Friday 7 am - 6 pm MST.
Email: CustomerService@truaudio.com

TruAudio
198 N Old Highway 91
Hurricane, UT 84737 USA

